

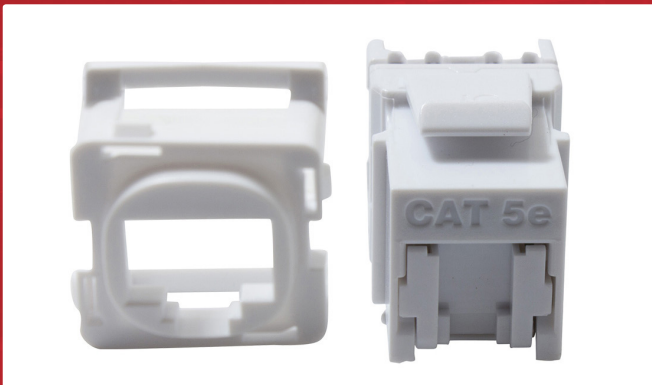
SHUTTERED JACKS - CAT5E & CAT6

CABAC jacks have been tested to meet all the electrical performance requirements of ANSI/TIA 568-C.2 and ISO 11801 standards and feature gold plated contacts for superior performance and reliability.

Termination is made easy with both 568A and 568B wiring schemes printed on the jacks. Cables with conductors ranging from 24 to 22 AWG can be terminated into these IDC jacks up to 100 times with a 110 style punch down tool.

FEATURES AND BENEFITS

- Performance tested to ANSI/TIA 568-C.2 and ISO 11801
- 568A and 568B wiring schemes printed on jack
- Punch down with 110 style tool
- Gold plated contacts for superior performance
- RCM and RoHS Compliant
- Includes bezel for mounting into Clipsal style wall plates
- Easily installed with a CABAC KPT4 Impact Punch Down Tool



JACK SHUTTERED CAT5E 110

- Performance tested to ANSI/TIA 568-C.2 Cat5e and
- ISO 11801 Class D
- Available in black and white

Part No. J5E/10-SH (white)

Part No. J5EBK/10-SH (black)



JACK SHUTTERED CAT6 110

- Performance tested to ANSI/TIA 568-C.2 Cat6 and
- ISO 11801 Class E
- Available in black and white

Part No. J6/10-SH (white)

Part No. J6BK/10-SH (black)



Legend Performance Technology

In support of our policy of continuous product improvement we reserve the right to change materials and specifications without notice. Drawing where used, are not to scale. All dimensions are in millimetres and sizes given are approximate. Where possible, technical MSDS data sheets are made available on the website. All products should be installed and used in accordance with manufacturer's instructions provided. Warning: products may be the subject of registered designs and patents. Refer to website for terms and conditions on warranty.