

## Defence Wall Box

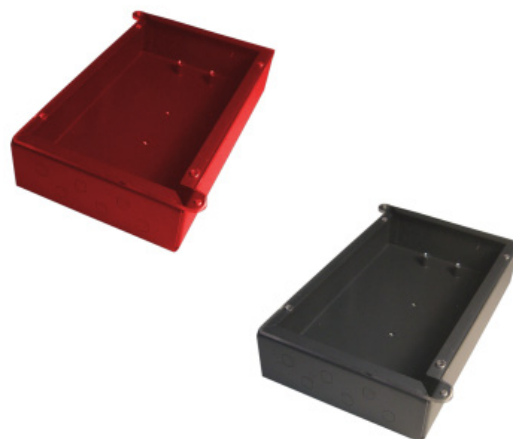


### PRODUCT INFORMATION

The MSS Defence Wall Box has a compact and heavy duty design, made from powder coated 1.6mm zinc seal® steel to withstand the toughest of environments. Utilises knock-out holes to ensure unused ports remain sealed. Optional 3mm thick clear polycarbonate covers for visual inspection.

### FEATURES & BENEFITS

- Punch-out holes
- Small compact design
- Supports 1 splice tray
- Optional metal lid to ensure safety
- Supplied with mounting screws
- Optional transparent lids
- Provision for roto seals



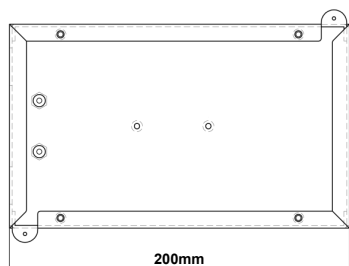
### SPECIFICATIONS

Size	42H x 200W x 120D mm		
Connector Styles	ST	SC	SC-SCD
	6 x ST Ports	6 x SC Simplex Ports	1 x SC Simplex 1 x SC Duplex Ports
Colours	Grey / Red		
Compound	Steel		
Weight (without lid)	610g		
Metal Lid	155g		
Plastic Lid	50g		

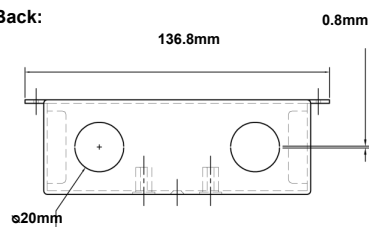
In support of our policy of continuous product improvement we reserve the right to change materials and specifications without notice. Drawings, where shown, may not be to scale. Dimensions are metric and size maybe approximate. Where possible data sheets including MSDS are made available on our website and apps. All products should be installed and used in accordance to manufacturer's instruction provided. Warning: products may be subject of registered designs and patents. Refer to our website or apps for terms and conditions on warranty.

## Defence Wall Box

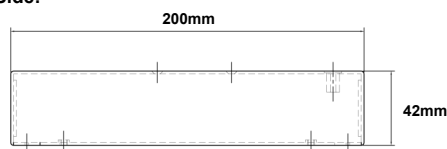
Top:



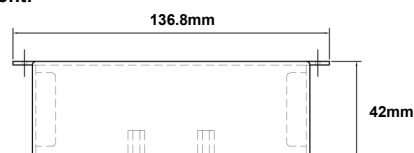
Back:



Side:



Front:



## ORDERING INFORMATION

Part Number	Description
WB-FOB-SC-SCD	Defence Spec Wall Box 1 x SC Simplex 1 x SC Duplex
WB-FOB-ST	Defence Spec Wall Box 6 x ST
WB-FOB-SC	Defence Spec Wall Box 6 x SC Simplex

## ORDERING EXTRAS

Part Number	Description
MSS-BAG-BITS	1x M20 Cable Gland, 4x Cable Ties, 4x Clips, 1x Clamp

In support of our policy of continuous product improvement we reserve the right to change materials and specifications without notice. Drawings, where shown, may not be to scale. Dimensions are metric and size maybe approximate. Where possible data sheets including MSDS are made available on our website and apps. All products should be installed and used in accordance to manufacturer's instruction provided. Warning: products may be subject of registered designs and patents. Refer to our website or apps for terms and conditions on warranty.