

FCAT Field Assembly Optical Connector LC Hard Boot



PRODUCT INFORMATION

LC Hard type Field Assembly Optical Connector (FAOC) is designed for fast and simple field termination of FTTH Drop cable and Indoor cables without any extra manufacturing process like polishing and epoxy on the ferrule. The FAOC is made with high precision and quality zirconia ferrule and provide a highly reliable connection in most of the fiber optic network application.

FEATURES & BENEFITS

- Highly stable and reliable performance
- Intermateability IEC 61754 20
- EU regulation : RoHS
- Flammability Grade : UL94 V0 (Optional)
- High Success Rate design and technology
- Reusable termination capability (up to 5)

APPLICATION

- Fiber To The Home network
- Fiber Optic cable Distribution network

USER GUIDE

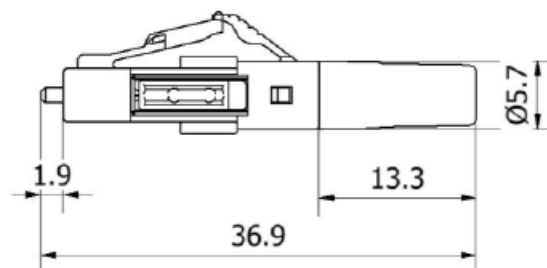
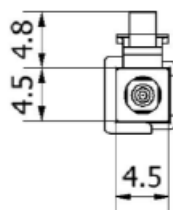
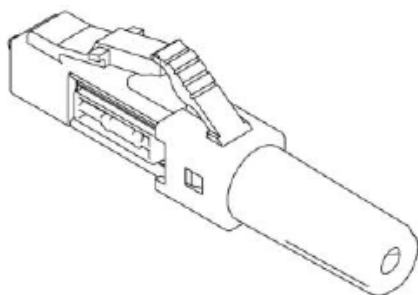
Fiber/Cable	Size (mm)	LC		
		LC Hard Boot		
		LC 37	LC 45	LC 48
Bare Fiber	0.25	0	0	
Indoor Cable	0.9	0	0	
	2.0	0	0	
	3.0			0
FTTH Drop Cable	3.0			0

In support of our policy of continuous product improvement we reserve the right to change materials and specifications without notice. Drawings, where shown, may not be to scale. Dimensions are metric and size maybe approximate. Where possible data sheets including MSDS are made available on our website and apps. All products should be installed and used in accordance to manufacturer's instruction provided. Warning: products may be subject of registered designs and patents. Refer to our website or apps for terms and conditions on warranty.

FCAT Field Assembly Optical Connector LC Hard Boot (CONT.)

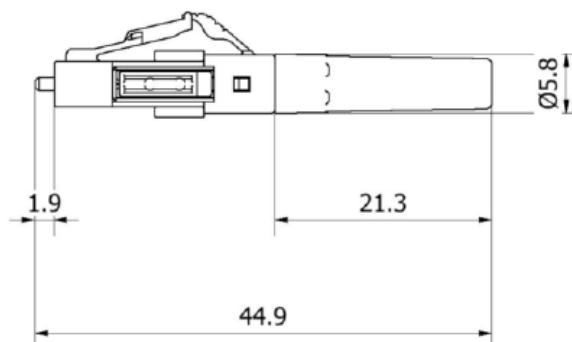
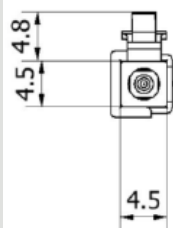
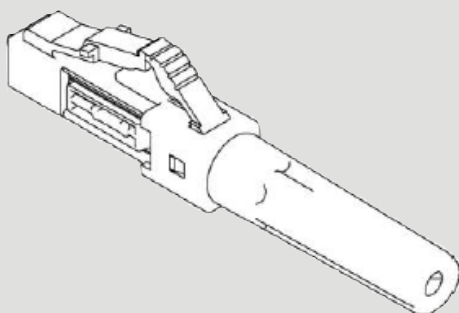
DIMENSION

LC Hard Boot 37 mm

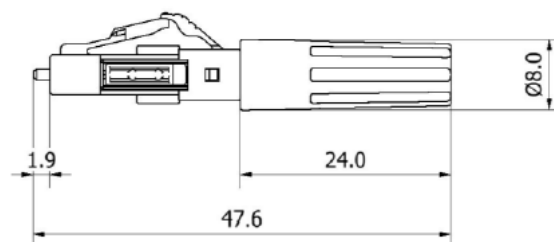
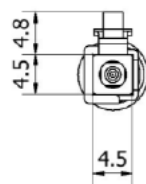
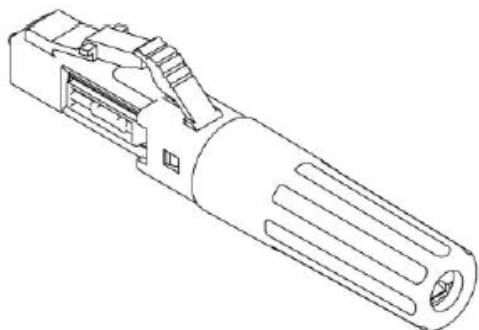


STANDARD OFFERING

LC Hard Boot 45 mm



LC Hard Boot 48 mm



In support of our policy of continuous product improvement we reserve the right to change materials and specifications without notice. Drawings, where shown, may not be to scale. Dimensions are metric and size maybe approximate. Where possible data sheets including MSDS are made available on our website and apps. All products should be installed and used in accordance to manufacturer's instruction provided. Warning: products may be subject of registered designs and patents. Refer to our website or apps for terms and conditions on warranty.

FCAT Field Assembly Optical Connector LC Hard Boot

OPTICAL PERFORMANCE

Characteristics	Condition	Unit	Value		
			Min	Mean	Max
Insertion Loss	UPC	dB		0.30	0.50
	APC	dB		0.30	0.50
Return Loss	UPC	dB	50.0	53.0	
	APC	dB	55.0	62.0	

GEOMETRY MANAGEMENT

Parameter	Unit	Spec(PC/APC)	Reference
Radius of Curvature	mm	7~25 / 7 ~12	GR 326 CORE 4.4.5 Geometry Requirement
Dome Offset(Max)	um	50 / 50	
Undercut or Protrusion(Max)	nm	-125~50 / 100~100	

END FACE MANAGEMENT

ZONES	SCRATCHES	DEFECTS	REFERENCE
A : Core (0 to 25um)	None	None	IEC 61300 3 35
B : Cladding (25 to 120 um)	No limit : <= 3um None : > 3um	No limit : < 2um Five : from 2 to 5um None : > 5um	
C : Adhesive (120 to 130um)	No limit	No limit	
D : Contact (130 to 250um)	No limit	None : >=10um	