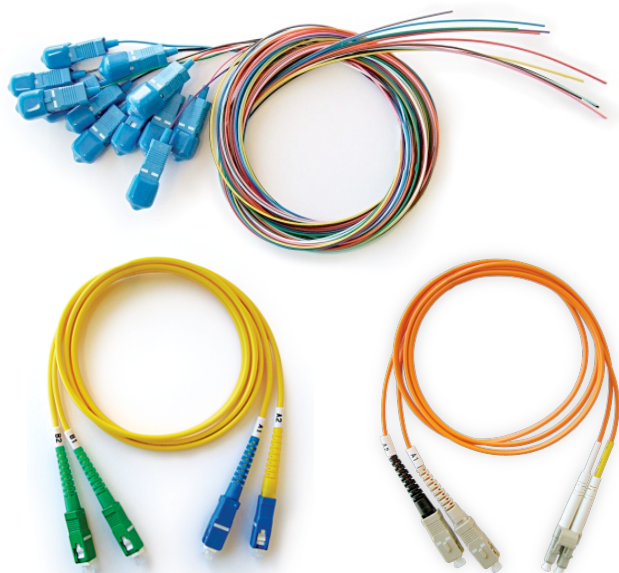


Patchleads & Pigtails



PRODUCT INFORMATION

PATCHLEADS

Widest range available ex-stock, including ST, SC, SCA, LC, MTRJ, in 1, 2, 3, 5, 10, 15 and 20m lengths. All connector styles, configurations and lengths can be manufactured, including special Defence colours and OS1, OM1, OM2 and OM3 cable.

PIGTAILS

Stocking SC, ST, FC and LC in OM1 (orange) / SC, ST, FC, LC in OM3 (Aqua) SC,SCA,ST and LC in SM1 (Yellow). Available in 6 packs in above colours or colour-coded 6 and 12 packs. All other connector types and configurations can be manufactured with short lead-times.



ORDERING INFORMATION: PIGTAILS

| Lead Type | Connector A | Length | Mode | Packing |
|-------------|-------------|---------------------------------------|------------------|----------------------|
| P (Pigtail) | ST | *m | MM (m/mode OM1) | 6 (6 pack) |
| | SC | | MM2 (m/mode OM2) | C12 (12 pack colour) |
| | SCA | *denotes length ie 1m +1mtr length | MM3 (m/mode OM3) | |
| | FC | | SM (m/mode OS1) | |
| | FCA | | | |
| | LC | | | |

In support of our policy of continuous product improvement we reserve the right to change materials and specifications without notice. Drawings, where shown, may not be to scale. Dimensions are metric and size maybe approximate. Where possible data sheets including MSDS are made available on our website and apps. All products should be installed and used in accordance to manufacturer's instruction provided. Warning: products may be subject of registered designs and patents. Refer to our website or apps for terms and conditions on warranty.

Patchleads & Pigtails

ORDERING INFORMATION: PATCHLEADS

| Cable Type | Connector A | Connector B | Lead Length | Mode |
|-------------|-------------|-------------|--------------------|------------------|
| D (Duplex) | ST | ST | *m | MM (OM1-m/mode) |
| S (Simplex) | SC | SC | | MM2 (OM2-m/mode) |
| | SCA | SCA | *denotes length | MM3 (OM3-m/mode) |
| | FC | FC | le 1m +1mtr length | SM (OS1-s/mode) |
| | FCA | FCA | | |
| | LC | LC | | |
| | LCA | LCA | | |
| | MTRJ | MTRJ | | |
| | SMA905 | SMA905 | | |
| | SMA906 | SMA906 | | |
| | E2000 | E2000 | | |
| | E2000A | E2000A | | |
| | FDDI | FDDI | | |
| | MU | MU | | |
| | MTP | MTP | | |
| | MTO | MPO | | |
| | DIN | DIN | | |
| | ESN | ESN | | |

| Lead Type | Connector A | Connector B | Lead Length |
|-------------|-------------|-------------|--------------------|
| D (Duplex) | ST | ST | *m |
| S (Simplex) | HFBR4501Z | HFBR4501Z | |
| | HFBR4503 | HFBR4503 | *denotes length |
| | HFBR4505Z | HFBR4505Z | le 1m +1mtr length |
| | HFBR4506Z | HFBR4506Z | |
| | HFBR4511Z | HFBR4511Z | |

In support of our policy of continuous product improvement we reserve the right to change materials and specifications without notice. Drawings, where shown, may not be to scale. Dimensions are metric and size may be approximate. Where possible data sheets including MSDS are made available on our website and apps. All products should be installed and used in accordance to manufacturer's instruction provided. Warning: products may be subject of registered designs and patents. Refer to our website or apps for terms and conditions on warranty.